

# INSTRUCTION MANUAL

## WARE WASHING REF : D-LVC50-A3P



**To ensure proper use of this appliance and your safety, please read the following instructions completely before operating this appliance.**

English – Original



## Index

<b>SAFETY &amp; WARRANTY</b>	<b>3</b>
Inspection upon receipt	3
Safety	3
<b>INSTALLATION</b>	<b>4</b>
Preliminary checks	4
Connection with water supply	4
Connection with the drainage	4
Connection with the power supply	4
<b>OPERATION</b>	<b>5</b>
Preparation	5
Control Panel	5
Starting the machine	5
Procedures before washing	5
Standby	6
Thermo-Protector	6
Washing Cycle Selection - Start	6
Draining	6
Filling of Detergent and Rinse Aid	6
Cold Water Rinse	7
Shutting down the machine	7
ECO Function	7
Soft Start Function	7
User's Menu	8
Maintenance and Repair	8
Alarm Indications	8
<b>TROUBLESHOOTING</b>	<b>9</b>
<b>ELECTRICAL DIAGRAM</b>	<b>10</b>
<b>EXPLODED VIEWS</b>	<b>11</b>
<b>STANDARDS AND DIRECTIVES</b>	<b>20</b>
<b>PACKAGING AND DEVICE DISPOSAL</b>	<b>20</b>



## **SAFETY & WARRANTY**

### **INSPECTION UPON RECEIPT**

Upon arrival of the package check if there is any visible damage or indications of rough handling that may be caused during transportation. In case that you spot any damages or you have doubts that the package was abused during transportation, please abort the installation and contact your supplier as soon as possible. Every washing machine before departure from our premises is tested in order to ensure its proper function and it is accompanied by the corresponding test report.

### **SAFETY**

This machine should be used only for the purpose that is intended, according to the operation instructions described herein. It is not allowed to modify it in any way. In case that this machine is either used not in compliance with the operation instructions or after technical modifications, the manufacturer is not responsible for its good operation or possible accidents.

### **CAUTION: THE WASHING WATER IS NOT POTABLE!**

Prior to the installation of the machine, please advise the label with its technical specifications (it is mounted on the side of the machine) and check carefully if it is compatible with the power supply network of your area. In any case that there is deviation, please abort the installation procedure.

If the washing machine's door is left accidentally open, a safety switch interrupts the washing procedure. In case of overload or overheating of the pump, there is also a safety switch that interrupts the power supply to the machine. That switch could be activated by the user as soon as the problem is remedied.

The installation of this ware washing machine, as well as its maintenance, should be performed by licensed technician according to the local regulations of your area and the herein described instructions.

### **Waste disposal**

According to the Directive 2002/95/EC OF THE EUROPEAN PARLIAMENT AND OF THE COUNCIL of 27 January 2003 on the restriction of the use of certain hazardous substances in electrical and electronic equipment (AHHE), the products and their parts covered by this directive should not be disposed of with regular garbage but be returned to the point of sale or be transferred to a recycling center for electrical and electronic appliances.

For further information address to the local authorities

## **INSTALLATION**

### **Preliminary checks**

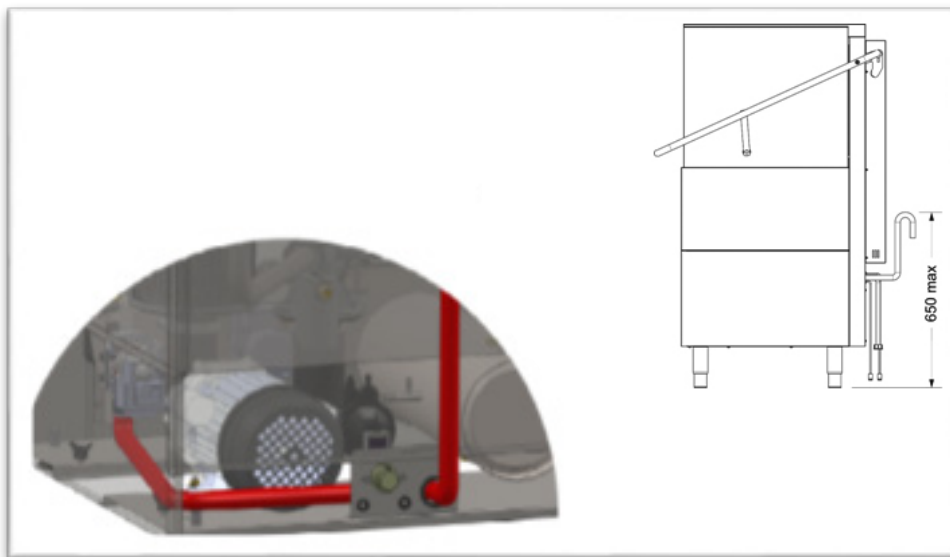
- The installation should be performed by licensed technician according to the instructions of this manual and the legal regulations of your area.
- Be sure that the machine was not damaged during handling.
- Check carefully that the technical details of this ware washing machine (written on the nameplate) are compatible with your network's power supply.
- Prior using the washing machine for first time, clean it thoroughly with a conventional detergent.

### **Connection with water supply**

- Place the washing machine in the desirable place in sufficiently stable horizontal ground.
- Be sure that the power supply is not connected.
- The water inlet and water outlet hoses that are required for the installation are included in the package. Before connection you should rinse them.
- The water inlet hose should have a diameter of at least 16 mm and the connection with the pipe  $\frac{3}{4}$ ".
- The minimum water supply pressure should be 2 bar and the maximum 5 bar.
- In the water supply hose there should be installed a non-returning valve according to DIN 1988

### **Connection with the drainage**

- Connect the drainage of the washing machine with your network's drainage as shown in the next figure :



Special care should be given so that the highest point of the flexible drainage hose is placed lower than 650 mm. Otherwise, reverse flow of the water could occur.

### **Connection with the power supply**

This machine works under specific power supply and voltage that are explicitly mentioned in the nameplate of the product. Prior installation please kindly check it.

The installation procedure should be performed by licensed technician.

## OPERATION

This washing machine is intended only for cleaning dishes, plates, forks, knives etc. Be careful in order to wash items suitable for dishwashing. Solid food residuals should be removed from the items before washing them in the machine. For better results you could soak the items for some time, especially if there is elapsed enough time after usage. Do not use this machine for washing items that were in service / contact with acids, mineral oil, grease, gasoline or colors.

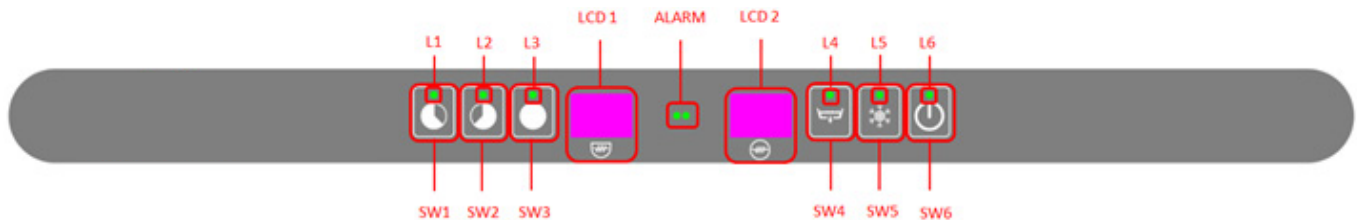
### Preparation

Fill the baskets placing the glasses and cups with the opening facing down in the locations of the basket that have the correct molding.

Plates should be stacked vertically in appropriate baskets without touching each other.

In any case avoid the overloading of the baskets.

### Control Panel





BOUTON	NOM	DESCRIPTION	NOTES
SW1	CT1	Short Cycle Button	Duration 1 min
SW2	CT2	Medium Cycle Button	Duration 2 min
SW3	CT3	Long Cycle Button	Duration 3 min
SW4	DB	Drain Pump Button	
SW5	CRB	Cold Rinse Button	
SW6	ON	ON/OFF Switch	
LED TABLE			COLOR
L1	LED of short cycle selection		
L2	LED of medium cycle selection		
L3	LED of long cycle selection		
L4	Drain in Progress		
L5	Cold Rinse Selected		
L6	LED of ON/OFF Switch		

### Starting the machine

In order to start the machine, press the Button SW6 (ON) for 3 sec. The LED L6 flashes red and a buzzer sounds.

### Procedures before washing

Since the washing machine is switched on, the boiler and the wash tank start filling with water. Next, the machine gets filled with detergent and rinse aid. During these, a "FILL" message appears on the Dash. After the tanks are filled with water and the necessary detergent and rinse aid liquids are captured, the boiler's heating resistance and the wash tank's heating resistance start working sequentially (after reaching boiler's temperature of operation, its resistance shuts down and the wash tank starts heating). On the LCD1 & LCD2 screens the current temperature of each tank is displayed alternately (when LCD 1 shows "bt" then LCD 2 displays boiler's temperature; when LCD 1 shows "tt", then LCD 2 displays tank temperature). In case that the wash tank's heating resistance is ON, a dot in the right lower corner of LCD1 is lit, while in case that the boiler's heating resistance is ON a dot in the right lower corner of LCD2 is lit. For that reason, symbol  (representing the tank) is shown beneath of LCD1 & symbol  (representing the boiler) is shown beneath of LCD2.

### Standby

During Standby operation (after the automatic set up procedures), LCD 1 & LCD 2 should display the temperature of the wash tank & boiler tank alternately.

LCD1	LCD2
bt ou tt (alternating)	--°C

If the machine stays on Standby mode for more than 30 min, then it turns into sleeping mode for minimizing power consumption. When this occurs, LCD 1 & LCD 2 turn off and L6 is flashing. By pushing SW6, the machine is again ready for operation.

### Thermo-Protector

In order to start the first washing cycle of the day, both temperatures in the tank and the boiler must reach operational values (60 & 85 respectively). In all the other cycles, due to Thermo-Protector system, if the temperature in the boiler is not appropriate for rinsing, the washing cycle continues until the rinse water becomes sufficiently heated. A message on the screen informs the user that the washing cycle continues; LCD1 shows the current value of the water temperature in the boiler and LCD2 shows "ht" (i.e. heating).

### Washing Cycle Selection - Start

This washing machine has three washing cycle program options. The user could choose between short, medium and long program by pushing one of the buttons SW1, SW2 or SW3 accordingly. After pushing the corresponding button, the washing cycle starts automatically, UNLESS the door is accidentally open. In the latter case a message "door" is shown in the Dash and the washing starts again as soon as the door is closed. The remaining time (in seconds) is displayed on the Dash.

**⚠ Important note:** In case that the door is open accidentally before program is finished, the washing stops and the timer resets. Therefore, in order to finish the cycle, you should start the procedure from the beginning.

**⚠ Important note:** 10 sec before finishing main wash the draining pump starts working and it stops 10 sec after rinse cycle.

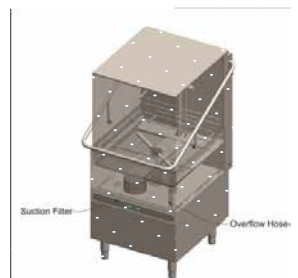
After completion of the washing cycle, a message "end" on the dash informs the user that the program is finished. The message appears until the door is opened again.

### Draining

This machine has draining pump, so that the draining cycle is performed automatically. If you want to perform draining on demand, please remove the overflow hose that is placed on the wash tank and press the Button SW4. After 15 sec the draining starts and LED L4 flashes.

During draining, an internal check of the system is performed, ensuring that the heating resistances are switched off. In that sense, any possible overheating caused by heating resistances not immersed in water is avoided. As soon as draining stops, for the next 30 sec the system performs self-cleaning (door must be closed).

**⚠ Kindly note that after every On-Demand draining execution, the machine shuts down.**



### Filling of Detergent and Rinse Aid

This machine is equipped with peristaltic pumps for the rinse aid and the detergent filling. The filling inlets for each one are the two corresponding hoses which should be immersed in the appropriate tanks.

The filling procedure is performed in two stages. The initial filling (when you turn the machine on) and additional re-fillings after each washing cycle:

1st Stage: During automatic preparation (before the first wash) the machine receives from the tank soap for 180 sec and rinse aid for 35 sec. This could be adjusted from the user through the User Menu \*Check Section "User Menu".

2nd Stage: During every complete washing & rinsing cycle, the machine receives detergent for 13 sec and rinse aid for 12 sec. This could be adjusted from the user through the User Menu \*Check Section "User Menu"

**NOTE:** In case that you need to adjust the Detergent or Rinse Aid from the User Menu, please bear in mind that for each second the corresponding pump captures the following liquid quantities:

Detergent pump: 0.83 ml/sec

Rinse Aid pump: 0.19 ml/sec

By multiplying these quantities with the time duration (seconds) that the pump works, you can calculate the volume of each liquid that it is used.





**Warning:** The machine receives rinse aid during washing cycle and detergent during rinsing cycle.

#### **Cold Water Rinse**

This machine has Cold Water Rinse operation. It could be activated in order to be performed after every washing cycle or for On Demand occasions. In order to perform a Cold Water Rinse after one washing cycle, press Button SW5 for 1 sec. A single sound buzz will inform you that the machine is set up for a single cold rinse performance. Then, LED L5 will be on, while the procedure is performed.

In case that you wish to perform Cold Water Rinse after each washing cycle, press hold Button SW5 for 5 sec while the machine is on Standby mode. A double sound buzz will inform you that the machine is set up for a cold rinse performance after every washing cycle (LED L5 will lit). Should you undo the selection, please repeat the above procedure.

#### **Shutting down the machine**

In case that you want to shut down the machine, remove the overflow hose in the wash tank and press the Button SW4. The machine is going to drain automatically the used water, perform a self-cleaning cycle and then shut down. An alternative way is to press continuously the Button SW6 until the indication "OFF" appears in the first line of the screen (it will take about 5 sec). The recommended way is the first.

#### **ECO Function**

In case that the machine is in Standby operation for more than 15 minutes, the Boiler's temperature lowers in order to avoid unnecessary power consumption. During these intervals, if the door of the washing machine opens, the ECO Function stops.\*

#### **Soft Start Function**

This machine is equipped with Soft Start System that enables the water pump to start with lower pressure and gradually increases it, so that the sensitive crystals are not damaged.

### User's Menu

In order to enter the User's Menu, shut down the machine and press hold Buttons SW1, SW3 & SW6 at the same time for 3 sec with the door closed. LED L6 flashes and a beeper sounds three times. Message "conf" appears for a few seconds and the User's Menu is activated.

Find the parameter that you wish to adjust using Buttons SW3 and SW4 for navigation inside the menu. The corresponding parameter will be displayed on the screen.

Should you wish to increase the amount (+), press Button SW1

Should you wish to decrease the amount (-), press Button SW2

After defining the value, press Button SW5 once in order to register the value in the memory.

In the matrix that is presented below you can find a short description of the functions that can be adjusted by the user, as well as their default value.

N°	Parameter	Range	Default	Indication
1	TEMPERATURE MODE	C/F	C	C
2	BOILER TEMPERATURE	30-92 C	85 C	bt
3	TANK TEMPERATURE	30-70 C	60 C	tt
4	DETERGENT TIME AT FILLING	100 – 300 SEC	180 SEC	dF
5	DETERGENT TIME AT CYCLE	0 – 30 SEC	13 SEC	dc
6	RINSE AID TIME AT FILLING	0 – 90 SEC	35 SEC	rF
7	RINSE AID TIME AT CYCLE	0 – 30 SEC	12 SEC	rC
8	COLD RINSE	0 (NON) – 1(OUI)	1	Cr
9	DRAINING DURATION	20 -60 SEC	25	Cd

In order to exit the User's Menu, press-hold Button SW6 for 3 sec. The beeper sounds three times and message "off" appears on the screen.

**After closing the User's Menu, the machine is shut down.**

### Maintenance and Repair

After 50.000 washing cycles, a Service reminding message will be displayed in the screen. Regular maintenance, performed by licensed technician using original spare parts is essential for proper function of the machine.

### Alarm Indications

If the system records any malfunction, then a warning message will be displayed on the screen. If such a condition occurs, please advise the following table which describes the problem shortly. Should you need further assistance, don't hesitate to contact your local reseller.

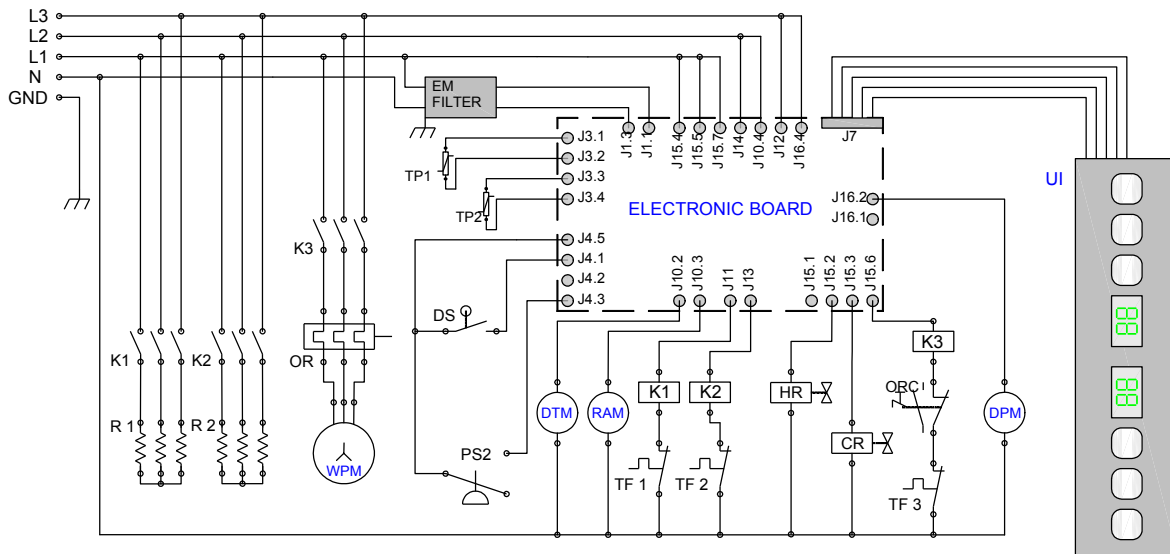
ALARM	PROBLEM DESCRIPTION
Alarm 1	Water filling time excession
Alarm 2	The water level during draining is not reduced
Alarm 3	Excess time of boiler heating
Alarm 4	Excess time of tank heating
Alarm 5	Water temperature in the boiler is above limits
Alarm 6	Water temperature in the wash tank is above limits
Alarm 7	Cold rinse alarm



**TROUBLESHOOTING**

PROBLEM	CAUSE	REMEDY
The dishwasher does not operate properly	Connection interruption	Check the connection
	You have not turned the switch of the appliance ON	Turn the switch ON
	Main switch / or fuse has not been activated / or it is faulty	Check the main switch / or fuse
	The switch of the appliance is faulty	Refer to the authorized local dealer who sold the appliance or directly to the manufacturer
	The water inlet valve is faulty	
	The door is not closed	Close the door
	You have not turned the water supply on	Turn the supply on
The appliance operates, but the switch LED does not light on	The LED is faulty	Change the LED
Boiler heating does not operate	Switch or main switch or fuse has not been activated	Check the switch of the appliance and the main switch or fuse
	The safety thermostat of the boiler is faulty	Refer to the authorized local dealer or the manufacturer
	The 93 thermal fuse of the boiler is faulty	
	Pressure regulator is faulty	Refer to the authorized local dealer or the manufacturer
	"Boiler heating" relay is faulty	
Boiler fuse is burned out	Refer to the authorized local dealer or the manufacturer	
Boiler heating operates, but LED does not turn on	Faulty LED	Change LED
Dispenser heating does not operate	Switch N1 of the appliance or main switch or fuse has not been activated	Activate the corresponding switch or fuse
	Boiler heating is open	Wait
The 85°C thermal fuse is faulty. The dispenser's fuse is burned out	The thermostat switch of 60 heating is faulty	Refer to the authorized local dealer or the manufacturer
	"Compartment heating" relay is faulty	
Dispenser's heating operates, but LED does not turn on	Faulty LED	Change LED
Pump motor does not operate	Main switch or fuse is not activated. The door is not closed.	Activate the main switch or fuse Close the door
	Main relay is faulty	Refer to the authorized local dealer or the manufacturer
	Pump motor is faulty	
	Program selection switch is faulty	
Motor operates, but pump does not rotate	An object has jammed the pump fin	Refer to the authorized local dealer or the manufacturer
	Salts or detergent have been petrified following non-operation of the appliance	Rotate the screw on the backside of the motor, until it rotates freely
Items do not dry (dishes, glasses, etc.)	Compartment has no drying aid	Insert drying aid to the compartment
	Drying valve is faulty	Refer to the authorized local dealer or the manufacturer
	Program switch is faulty	
	Rinsing arms do not rotate	
	Basket does not rotate	

**ELECTRIC DIAGRAM**



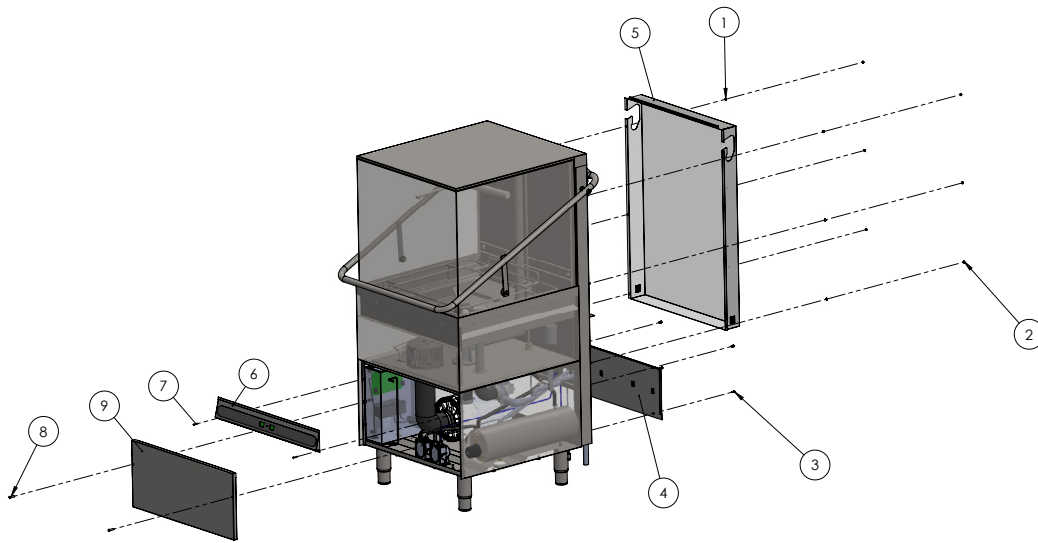
**ELECTRICAL DIAGRAM  
D-LVC-A3P  
SIMPLE PRESSURE**

380-415 Volt AC 50/60 Hz

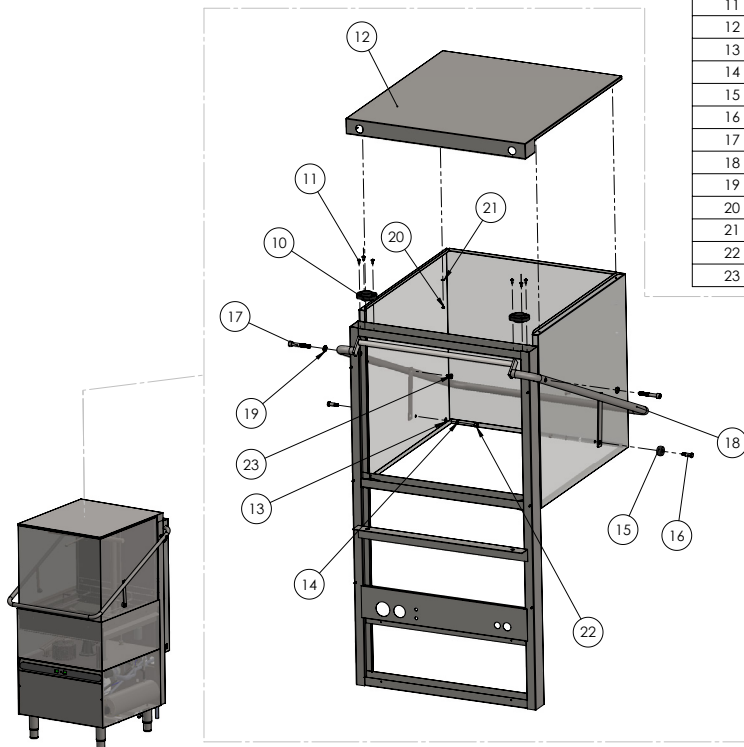
UI : Users interface	K1,2,3: Magnetic contactors
EMF : Electromagnetic filter	TF1 : Boiler's Thermofuse
DS : Door switch	TF2 : Tank's Thermofuse
PS1 : Tank pressostat	TF3 : Pump's Motor Thermofuse
HRV : Hot rinse valve	TP1 : Boiler's thermo probe
CRV : Cold rinse valve	TP2 : Tank's thermo probe
DTM : Detergent pump motor	OR : Overload relay
RAM : Rinse aid pump motor	ORC : Overload's relay breaking contact
R1 : Booster's heating element	WPM : Wash pump motor
R2 : Tank's heating element	DPM : Drain pump motor

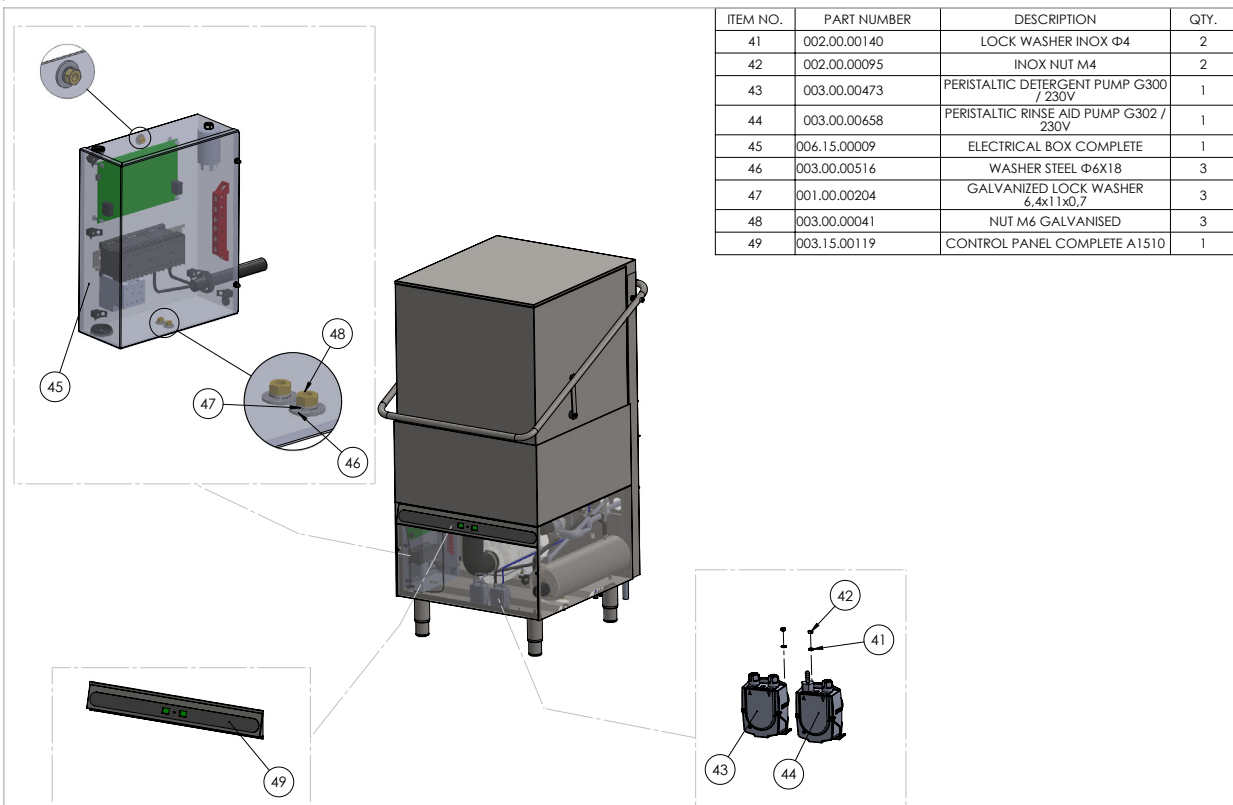
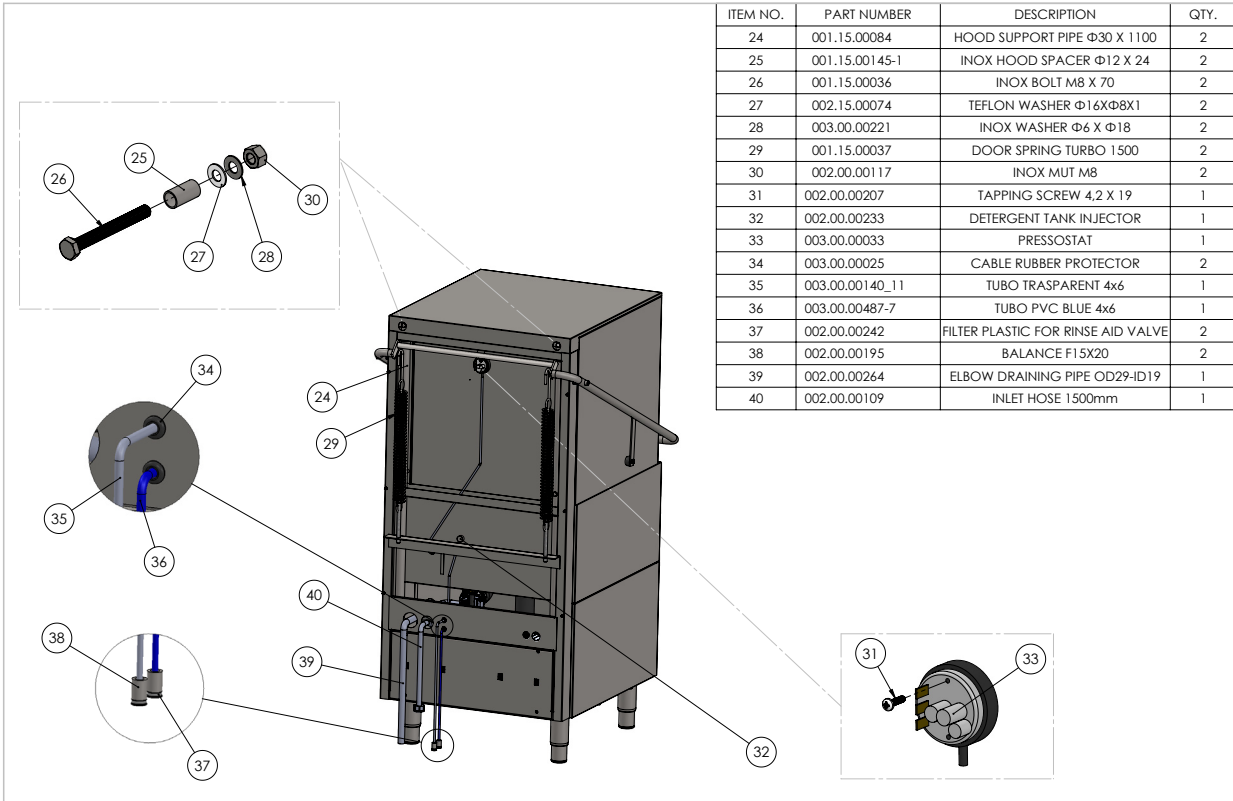
**EXPLODED VIEWS**

ITEM NO.	PART NUMBER	DESCRIPTION	QTY.
1	002.00.00140	LOCK WASHER INOX $\Phi$ 4	6
2	002.00.00095	INOX NUT M4	6
3	003.00.00309	INOX TAPPING SCREW $\Phi$ 4,1 X 13	4
4	001.15.00082	LOWER BACK COVER 1500	1
5	001.15.00001	BACK COVER 1500	1
6	003.15.00119	CONTROL PANEL COMPLETE A1510	1
7	001.00.00213	INOX SCREW M4X15	2
8	001.00.00247	M6X25 SCREW DIN6115	2
9	001.15.00156	FRONT COVER A1510	1

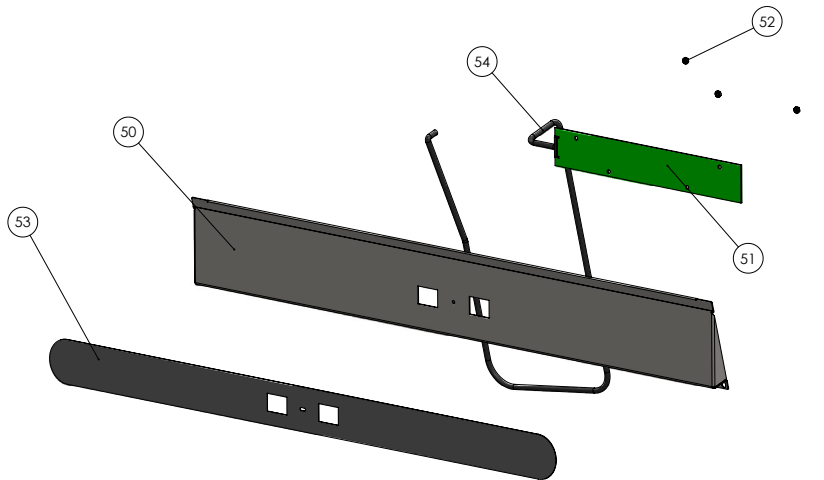


ITEM NO.	PART NUMBER	DESCRIPTION	QTY.
10	002.15.00044	PLASTIC GUIDE D.30	4
11	003.00.00346	TAPPING SCREW 4,8X13	12
12	001.15.00150	UPPER COVER	1
13	002.15.00074	TEFLON WASHER $\Phi$ 16X $\Phi$ 8X1	2
14	003.00.00221	INOX WASHER $\Phi$ 6 X $\Phi$ 18	2
15	003.00.00323	COPLER $\Phi$ 8 X $\Phi$ 31	2
16	002.15.00053	INOX AXLE BOLT M8x35 LONG	2
17	003.00.00274	INOX BOLT M10 X 64 ALLEN	2
18	001.15.00029	DOOR HANDLE 1500	1
19	001.00.00093	M10 NUT INOX	2
20	002.00.00095	INOX NUT M4	4
21	002.00.00274	TEFLON 10X4X1	4
22	002.00.00117	INOX MUT M8	2
23	002.15.00052	INOX AXLE BOLT SHORT M8 X 17	2



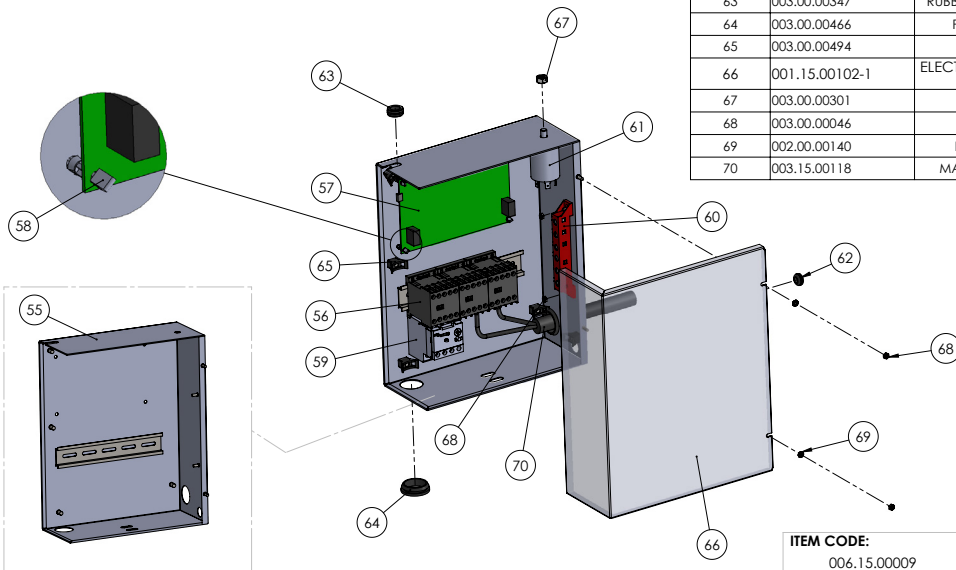


ITEM NO.	PART NUMBER	DESCRIPTION	QTY.
50	001.15.00155	DISPLAY PANEL INOX A 1510	1
51	003.00.00609	USER INTERFACE 7 SEGM. DISPLAY VERSION	1
52	002.00.00090	GALV. NUT M3	4
53	003.15.00117	FILM FOR A1510 (LCD)	1
54	003.00.00629	ATLAS-USER CONNECTION CABLE L=1000mm	1



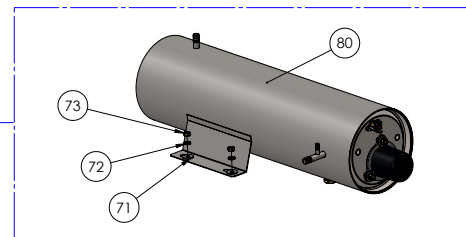
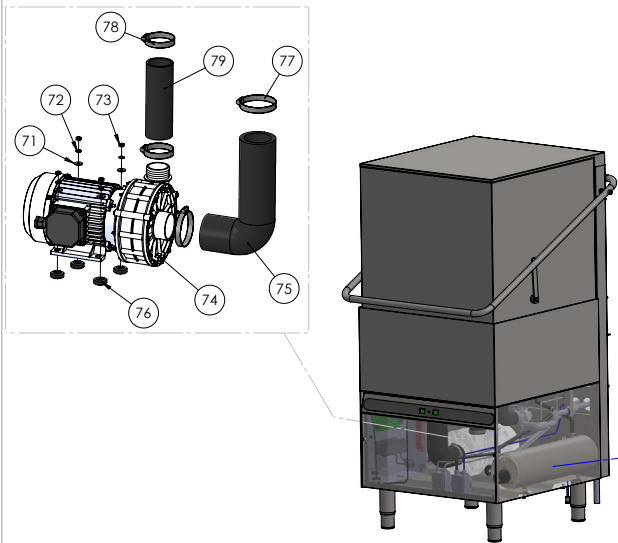
<b>ITEM CODE:</b> 003.15.00119	<b>ITEM DESCRIPTION:</b> CONTROL PANEL COMPLETE A1510
-----------------------------------	--

ITEM NO.	PART NUMBER	DESCRIPTION	QTY.
55	001.15.00101-1	ELECTRICAL COMPONENTS PANEL 1500	1
56	003.00.00056	MAGNETIC CONTACTOR	3
57	003.00.00607	ATLAS MAIN BOARD VERSION	1
58	003.00.00630	SPACER PCB RC-12 PLASTIC	4
59	003.15.00010	THERMAL OVERLOAD RELAY 2.5 - 4.0	1
60	003.00.00030	POWER SUPPLY BOARD 6CON	1
61	003.00.00625	ELECTROMAGNETIC FILTER 250V 50/60Hz 10A 400C	1
62	003.00.00025	CABLE RUBBER PROTECTOR	1
63	003.00.00347	RUBBER CABLE PROTECTION N.01	1
64	003.00.00466	PIPE RUBBER PROTECTOR	2
65	003.00.00494	CABLE PLASTIC CLAMP	5
66	001.15.00102-1	ELECTRICAL COMPONENTS BOX COVER 1500	1
67	003.00.00301	NUT M8 GALV	1
68	003.00.00046	NUT M4 (GALV)	4
69	002.00.00140	LOCK WASHER INOX Φ4	2
70	003.15.00118	MAIN WIRING SET A1510 NED	1

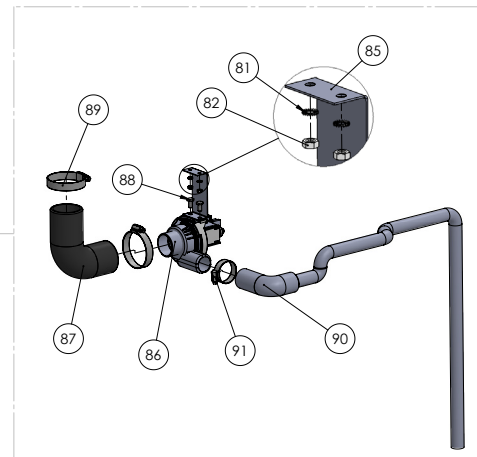
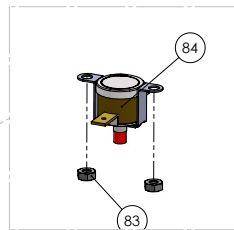
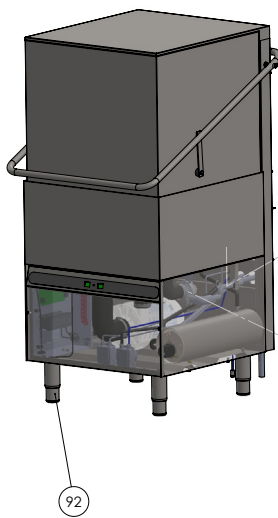


<b>ITEM CODE:</b> 006.15.00009	<b>ITEM DESCRIPTION:</b> ELECTRICAL BOX COMPLETE
-----------------------------------	---

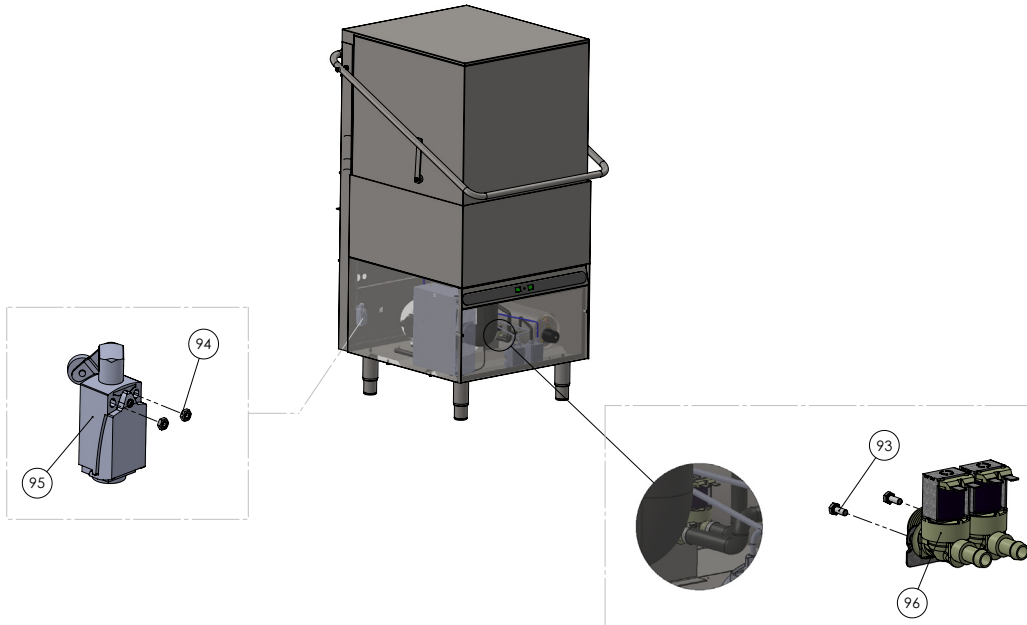
ITEM NO.	PART NUMBER	DESCRIPTION	QTY.
71	003.00.00516	WASHER STEEL Ø6X18	6
72	001.00.00204	GALVANIZED LOCK WASHER 6,4x11x0,7	6
73	003.00.00041	NUT M6 GALVANISED	6
74	003.00.00063	PUMP 1,50Hp, 400V, 50Hz	1
75	002.15.00058	PUMP INLET HOSE	1
76	003.00.00323-B	COPLER Ø8 -Ø31	4
77	002.00.00051	CLAMP 60-80	2
78	002.00.00051-1	CLAMP 60-80	2
79	002.15.00029	PUMP OUTPUT HOSE	1
80	006.15.00008	BOILER 1500 400V COMPLETE (1 HEATING ELEMENTS)	1



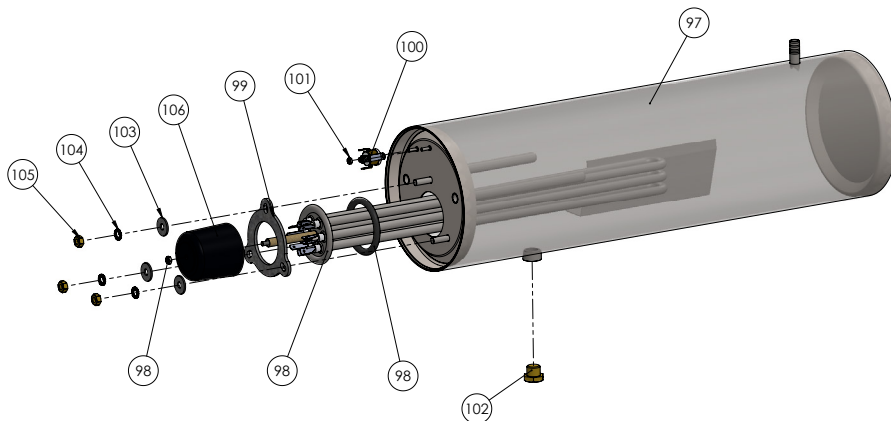
ITEM NO.	PART NUMBER	DESCRIPTION	QTY.
81	002.00.00140	LOCK WASHER INOX Ø4	2
82	002.00.00095	INOX NUT M4	2
83	002.00.00090	GALV. NUT M3	2
84	003.00.00168	THERMOFUSE TANK 90C	1
85	001.15.00169	BRACKET FOR DRAINING PUMP A1510	1
86	003.00.00184_595	TANK DRAINING PUMP 230V / 65W	1
87	002.00.00127-1	WASH PUMP HOSE (INPUT)	1
88	003.00.00355	INOX HEX SCREW M6X12	2
89	002.00.00049	CLAMP 35-50	2
90	002.00.00264	ELBOW DRAINING PIPE OD29-ID19	1
91	003.00.00244	CLAMP 20-32	1
92	001.00.00256	LEVELING FEET 1 3/4	4



ITEM NO.	PART NUMBER	DESCRIPTION	QTY.
93	003.00.00278	GALV. BOLT M4X10	2
94	003.00.00046	NUT M4 (GALV)	2
95	003.15.00003	DOOR SWITCH 1500	1
96	003.00.00151	Water Input Valve Double	1



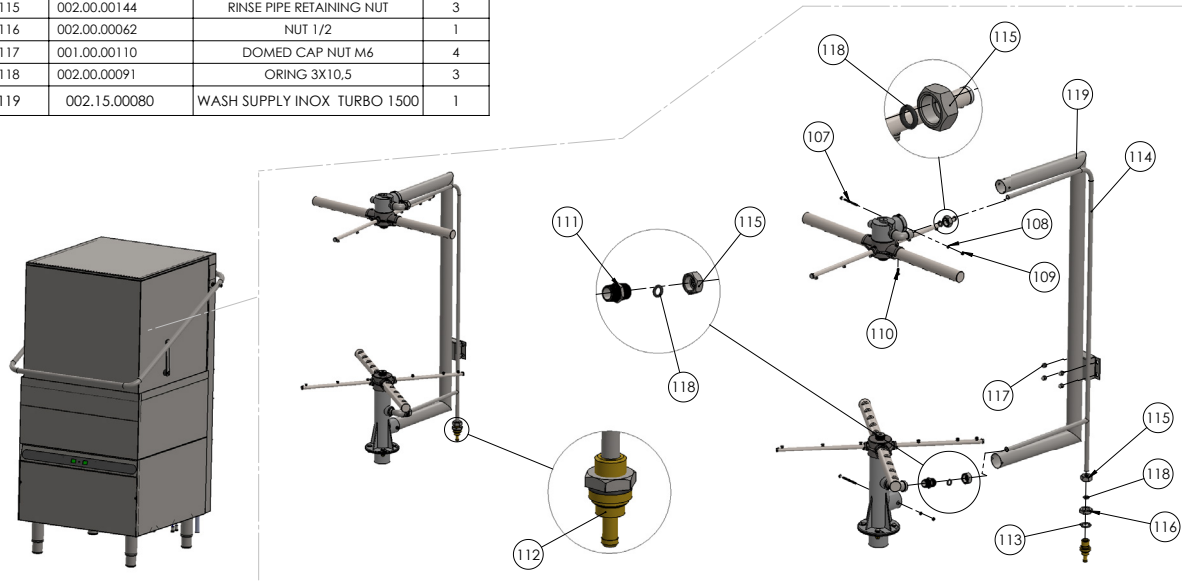
ITEM NO.	PART NUMBER	DESCRIPTION	QTY.
97	001.15.00148	BOILER TURBO 1500 NEW	1
98	003.00.00575	HEATER ELEMENT BOILER 1500, 7,5kW NEW	1
99	003.00.00260	BOILER ELEMENT FITTING BASE	1
100	003.00.00180	BOILER THERMOFUSE 105°C	1
101	002.00.00090	GALV. NUT M3	2
102	002.00.00076	BOILER DRAIN THREADED CAP	1
103	003.00.00516	WASHER STEEL $\Phi 6 \times 18$	3
104	001.00.00204	GALVANIZED LOCK WASHER 6,4x11x0,7	3
105	003.00.00041	NUT M6 GALVANISED	3
106	003.00.00004	HEATER ELEMENT COVER	1



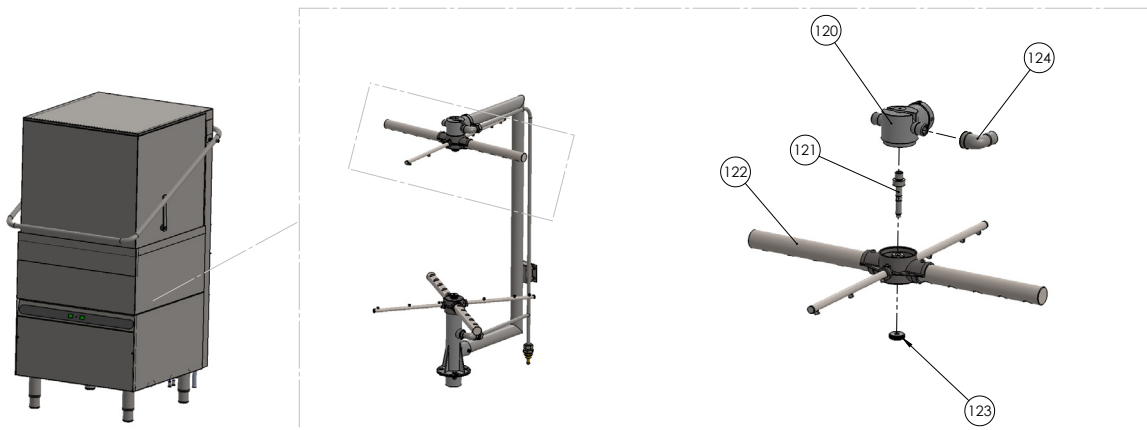
ITEM CODE:  
006.15.00008

ITEM DESCRIPTION:  
BOILER 1500 400V COMPLETE  
(1 HEATING ELEMENTS)

ITEM NO.	PART NUMBER	DESCRIPTION	QTY.
107	003.00.00441	INOX HEX BOLT M4 X 60	2
108	002.00.00140	LOCK WASHER INOX Φ4	2
109	002.00.00095	INOX NUT M4	2
110	002.00.00207	TAPPING SCREW 4.2 X 19	1
111	002.00.00030	NIPPLE 1/2 INOX	1
112	002.00.00083	RINSE BASE TUR - KN	1
113	002.00.00097	O-RING 20X4	1
114	002.15.00090	RINSE SUPPLY INOX TURBO 1500	1
115	002.00.00144	RINSE PIPE RETAINING NUT	3
116	002.00.00062	NUT 1/2	1
117	001.00.00110	DOMED CAP NUT M6	4
118	002.00.00091	ORING 3X10,5	3
119	002.15.00080	WASH SUPPLY INOX TURBO 1500	1

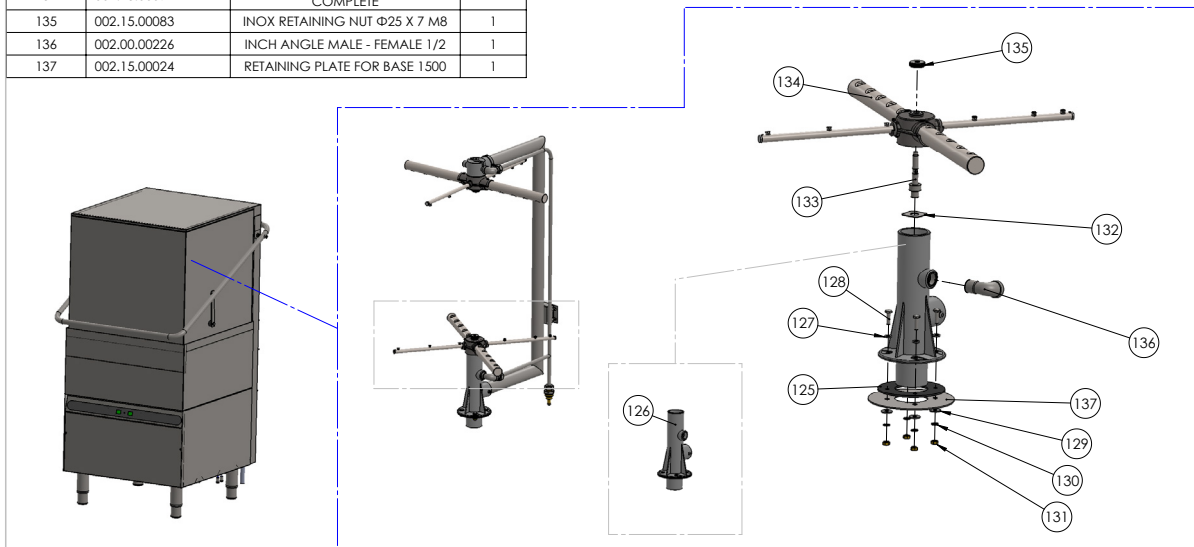


ITEM NO.	PART NUMBER	DESCRIPTION	QTY.
120	002.15.00086	WASH - RINSE UPPER BASE TURBO 1500	1
121	002.15.00082	INOX AXLE Φ20 M8 TURBO 1500 EVO	1
122	002.15.00091	WASH AND RINSE CROSS TURBO COMPLETE	1
123	002.15.00083	INOX RETAINING NUT Φ25 X 7 M8	1
124	002.00.00226	INCH ANGLE MALE - FEMALE 1/2	1

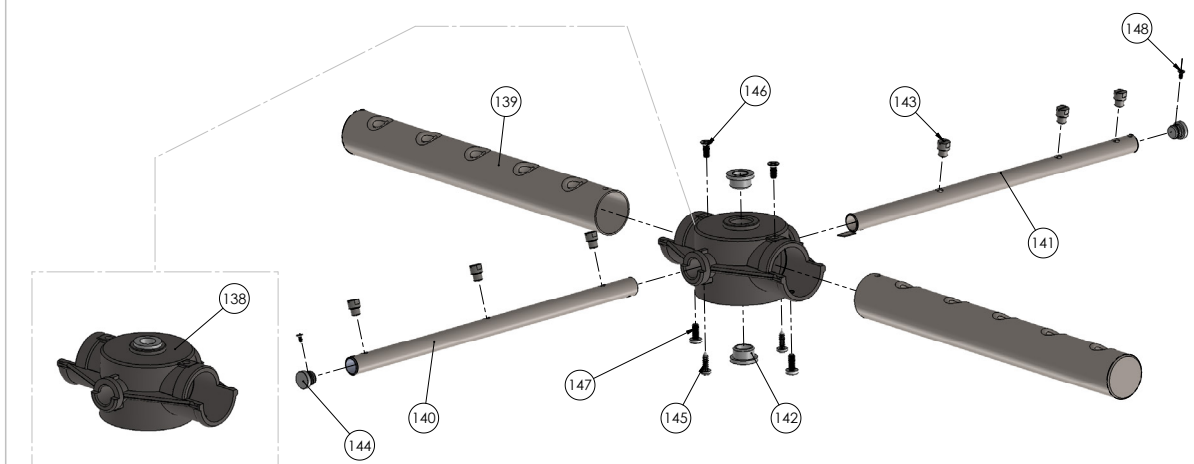




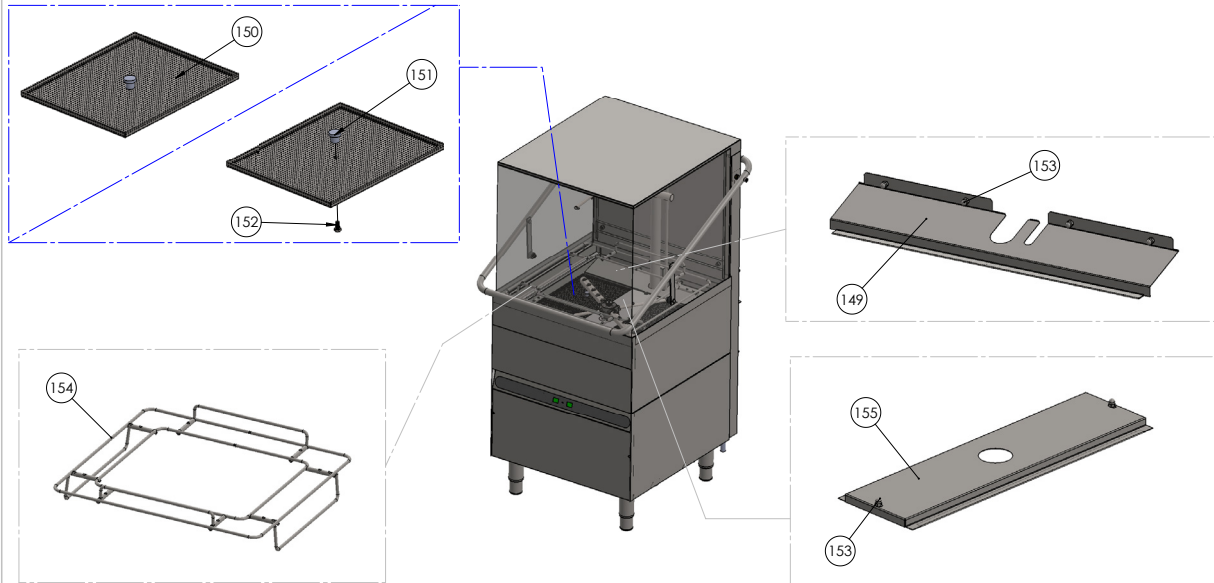
ITEM NO.	PART NUMBER	DESCRIPTION	QTY.
125	002.00.00223	RUBBER GASKET $\Phi 109 \times 54 \times 3$	1
126	002.15.00084-1	WASH & RINSE BASE TURBO 1500	1
127	002.00.00169	TEFLON 12-6-2	4
128	003.00.00104	INOX HEX BOLT M6X20	4
129	003.00.00516	WASHER STEEL $\Phi 6 \times 18$	4
130	001.00.00204	GALVANIZED LOCK WASHER 6,4x11x0,7	4
131	003.00.00041	NUT M6 GALVANISED	4
132	002.15.00103	FLOW CONTROL DISK TURBO 1500	1
133	002.15.00082	INOX AXLE $\Phi 20$ M8 TURBO 1500 EVO	1
134	002.15.00091	WASH AND RINSE CROSS TURBO COMPLETE	1
135	002.15.00083	INOX RETAINING NUT $\Phi 25 \times 7$ M8	1
136	002.00.00226	INCH ANGLE MALE - FEMALE 1/2	1
137	002.15.00024	RETAINING PLATE FOR BASE 1500	1



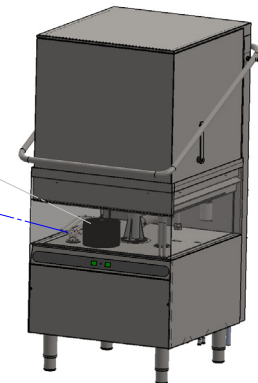
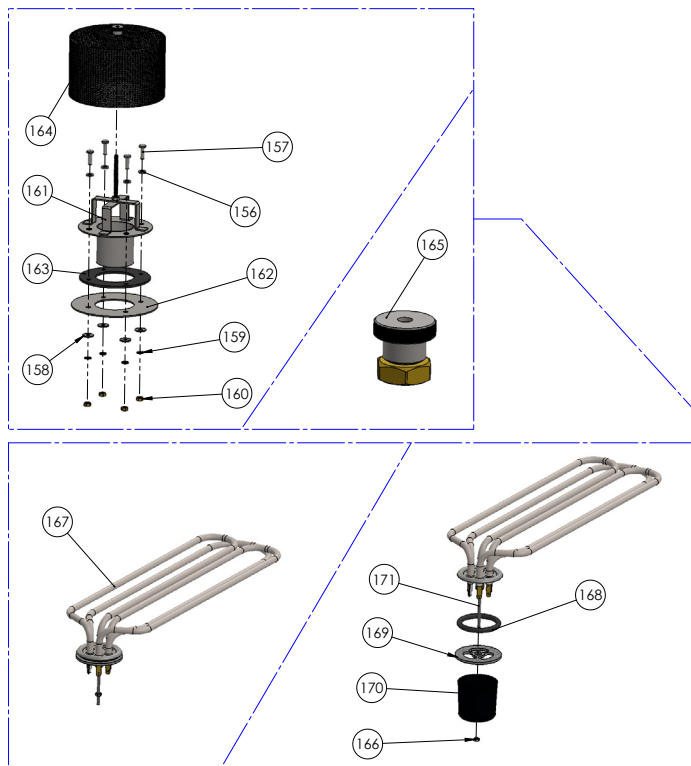
ITEM NO.	PART NUMBER	DESCRIPTION	QTY.
138	002.15.00085	RINSING - WASHING CROSS TURBO 1500	1
139	002.15.00089	PIPES TURBO 1500 INOX $\Phi 30 \times 1 \times$ 248	2
140	002.15.00093-B	INOX RINSE PIPE TURBO 1500 $\Phi 12 \times$ 245	1
141	002.15.00093-A	INOX RINSE PIPE TURBO 1500 $\Phi 12 \times$ 245	1
142	002.35.00026	TEFLON $\Phi 18 \times 10$	2
143	002.11.00008	SPRAYER FOR RINSING ARM BL.EU.VE.KN.1500	6
144	002.00.00145	CAP FOR RINSE ARM VE-KN-1500	2
145	003.00.00377	INOX MACHINE SCREW 3,5 X 13	2
146	003.00.00579	INOX SCREW M4 X 10	2
147	003.00.00580	INOX MACHINE SCREW M4 X 10	2
148	001.00.00073	INOX SCREW 2,9 X 10	2



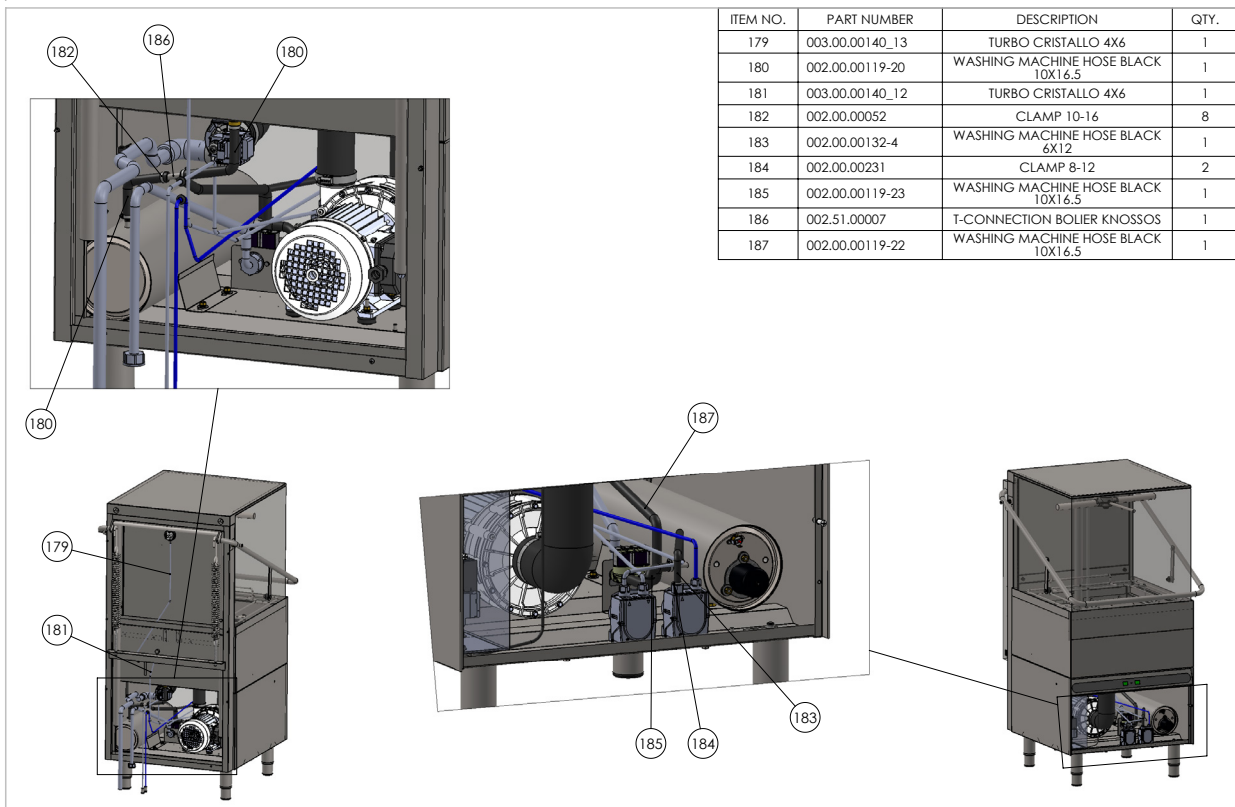
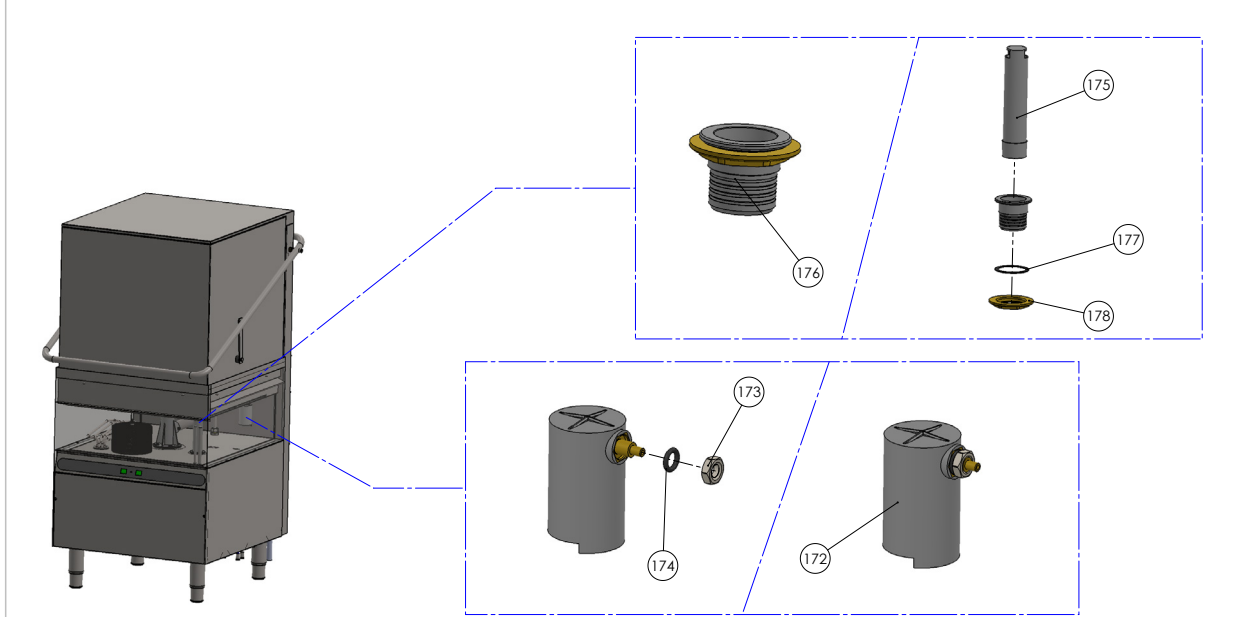
ITEM NO.	PART NUMBER	DESCRIPTION	QTY.
149	001.15.00095	SUPPORT FOR FILTER BACK	1
150	001.15.00012	FILTER ELEMENT	4
151	001.15.00153	Inox Knob For Square Tank Filter 1500-600	1
152	003.00.00242	INOX HEX SCROU M6X12	1
153	001.00.00110	DOMED CAP NUT M6	6
154	001.15.00113	BASKET SUPPORT 1500	1
155	001.15.00094	SUPPORT FOR FILTER MID	1



ITEM NO.	PART NUMBER	DESCRIPTION	QTY.
156	002.00.00169	TEFLON 12-6-2	4
157	003.00.00104	INOX HEX BOLT M6X20	4
158	003.00.00516	WASHER STEEL $\Phi$ 6X18	4
159	001.00.00204	GALVANIZED LOCK WASHER 6,4x11x0,7	4
160	003.00.00041	NUT M6 GALVANISED	4
161	002.15.00012	BASE FOR TANK FILTER TURBO 1500	1
162	002.15.00025	RETAINING PLATE FOR FILTER 1500	1
163	002.15.00075	TANK FILTER BASE RUBBER GASKET TURBO 1500	1
164	001.15.00078	PUMP FILTER TURBO 1500	1
165	001.00.00017	FILTER RETAINING NUT	1
166	003.00.00046	NUT M4 (GALV)	1
167	003.15.00095	TANK HEATING ELEMENT	1
168	002.00.00150	O-RING 45X6	1
169	003.00.00570	TANK HEATING ELEMENT RETAINING BRACKET	1
170	003.00.00004	HEATER ELEMENT COVER	1
171	003.00.00086	THREADED SHAFT M4X60	1



ITEM NO.	PART NUMBER	DESCRIPTION	QTY.
172	003.00.00014	PRESSOSTAT CHAMBER	1
173	002.00.00087	NUT M10	1
174	002.00.00091	ORING 3X10,5	1
175	002.15.00031	DRAIN AND OVERFLOW PIPE	1
176	002.15.00017	DRAIN AND OVERFLOW BASE	1
177	002.00.00102-1	DRAINING BASE GASKET 1500	1
178	002.00.00037	NUT 1 1/2"	1



## **STANDARDS AND DIRECTIVES**

### **Meaning of crossed out wheeled dustbin:**

Do not dispose of electrical appliances as unsorted municipal waste, use separate collection facilities.

Contact your local government for information regarding the collection systems available.

If electrical appliances are disposed of in landfills or dumps, hazardous substances can leak into the groundwater and get into the food chain, damaging your health and well-being.

When replacing old appliances with new ones, the retailer is legally obligated to take back your old appliance for disposals at least free of charge.

The device complies with current EU standards and directives. If necessary, we will send you the corresponding declaration of conformity.

### **Packaging disposal**

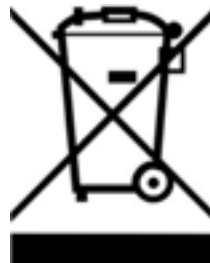
Please separate the packaging materials accordingly and return them to the responsible collection points for recycling and environmental housing.



### **Device disposal**

once the appliance has been used up, dispose of it properly at a collection point for electrical appliances. Electrical appliances do not belong in household waste.

Your responsible administration will inform you about the addresses and opening hours of collection points. This is the only way to ensure that old appliances are properly disposed of and recycled. Thank you very much!





CE